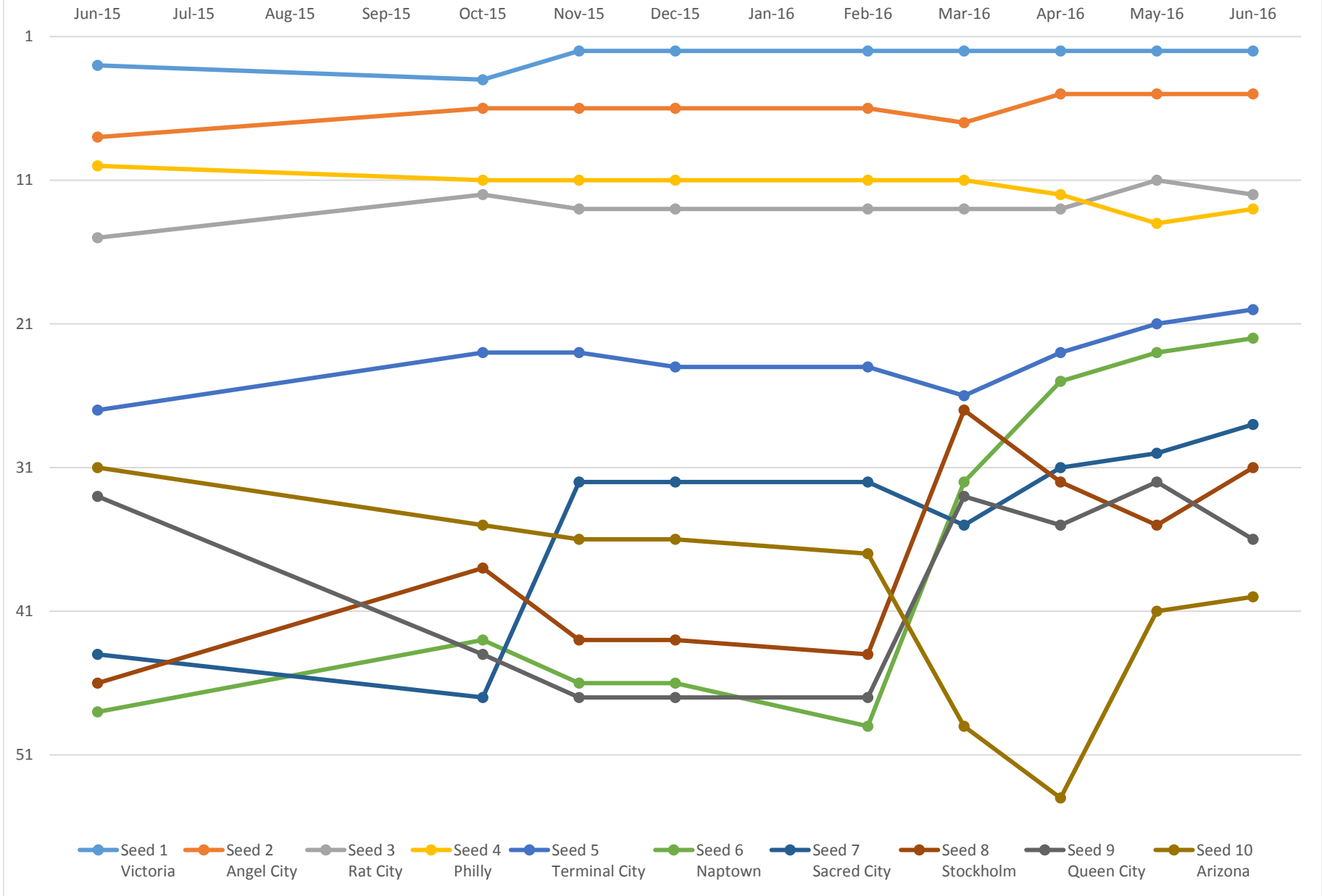
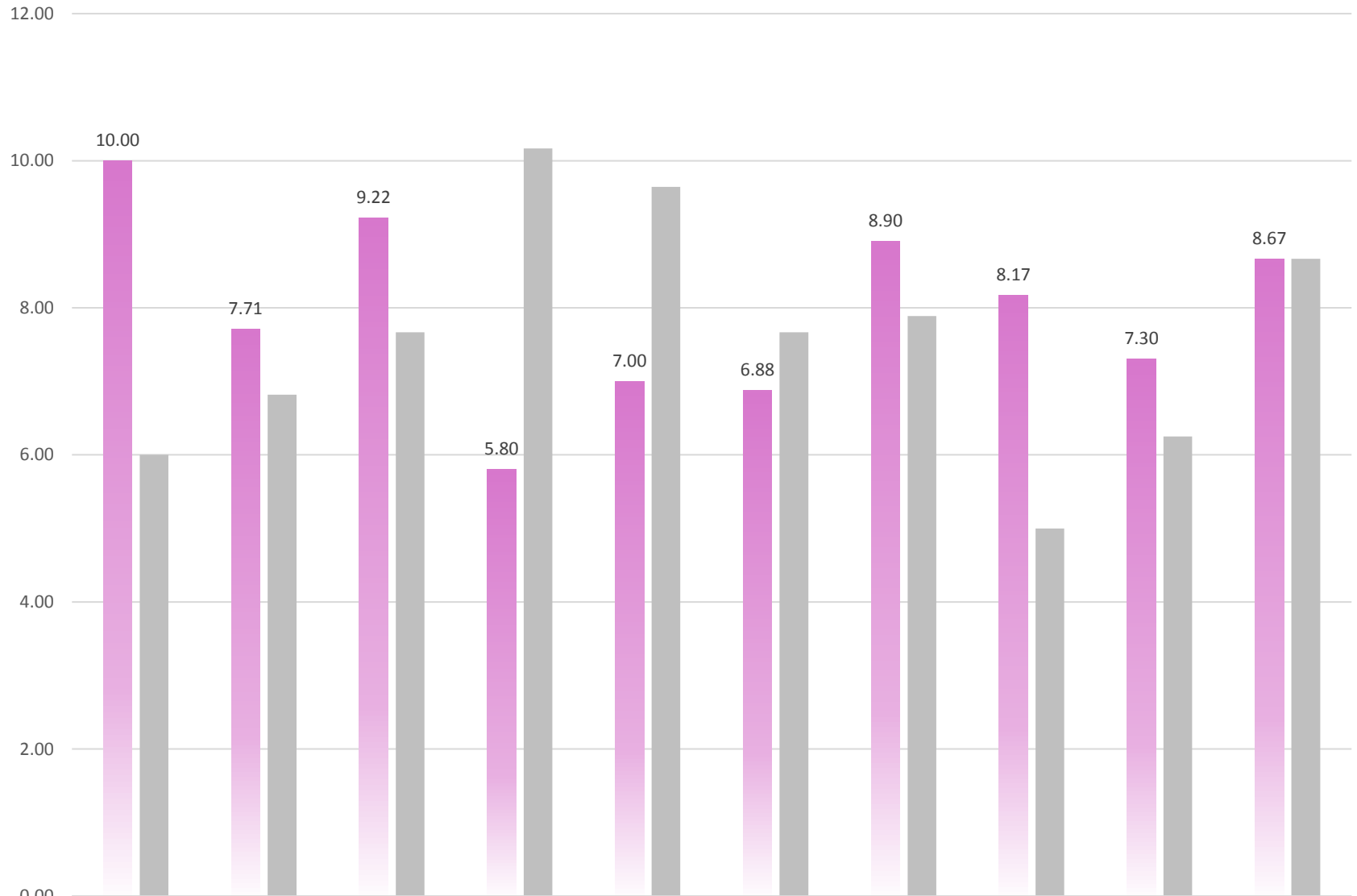


### 13 Month WFTDA Ranking Movement - D1 Vacouver



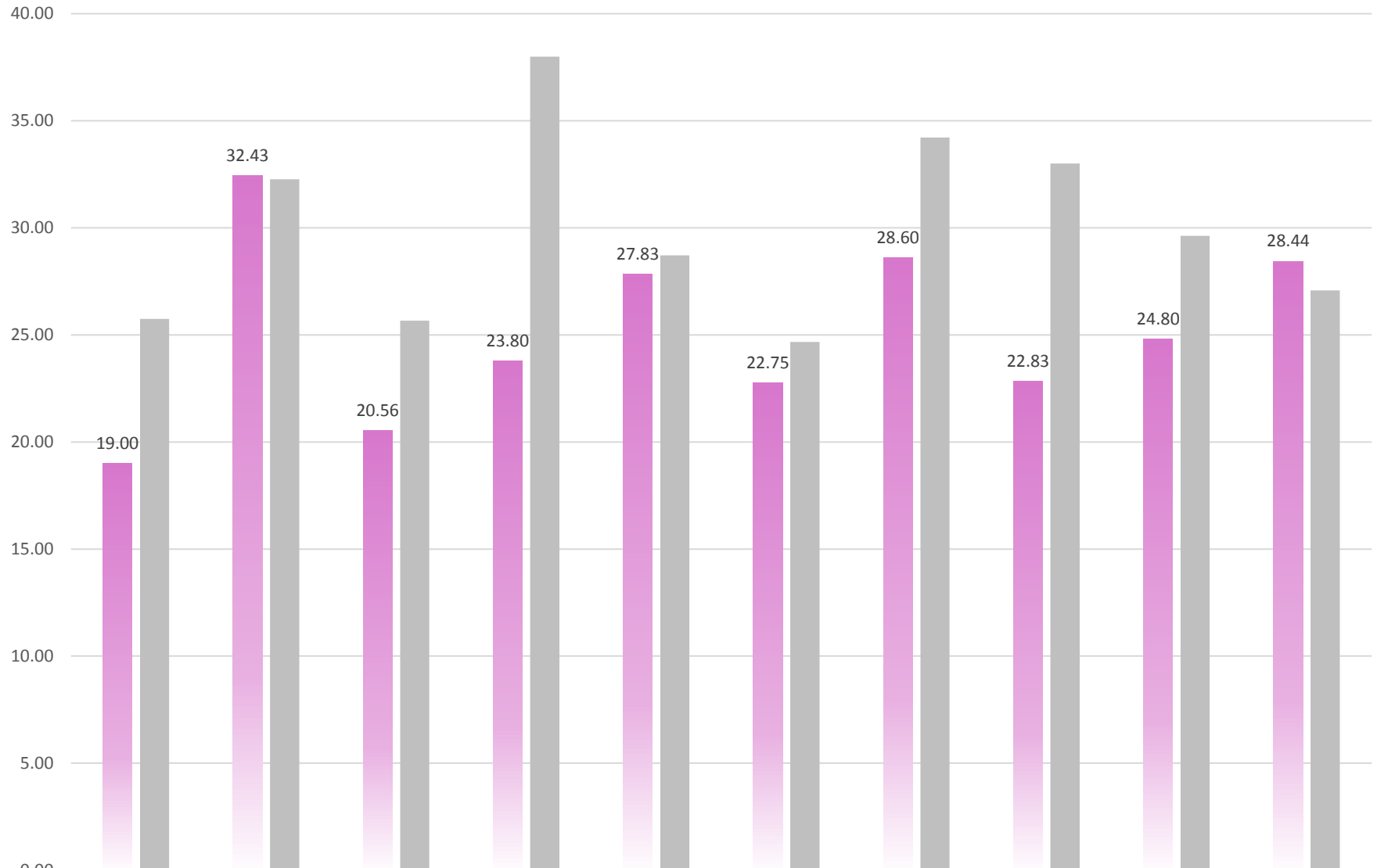
### Jammer Penalties Per Game - D1 Vancouver



■ 2016 Season  
■ 2015 Season

Victoria	Angel City	Rat City	Philly	Terminal City	Naptown	Sacred City	Stockholm	Queen City	Arizona
10.00	7.71	9.22	5.80	7.00	6.88	8.90	8.17	7.30	8.67
6.00	6.82	7.67	10.17	9.64	7.67	7.89	5.00	6.25	8.67

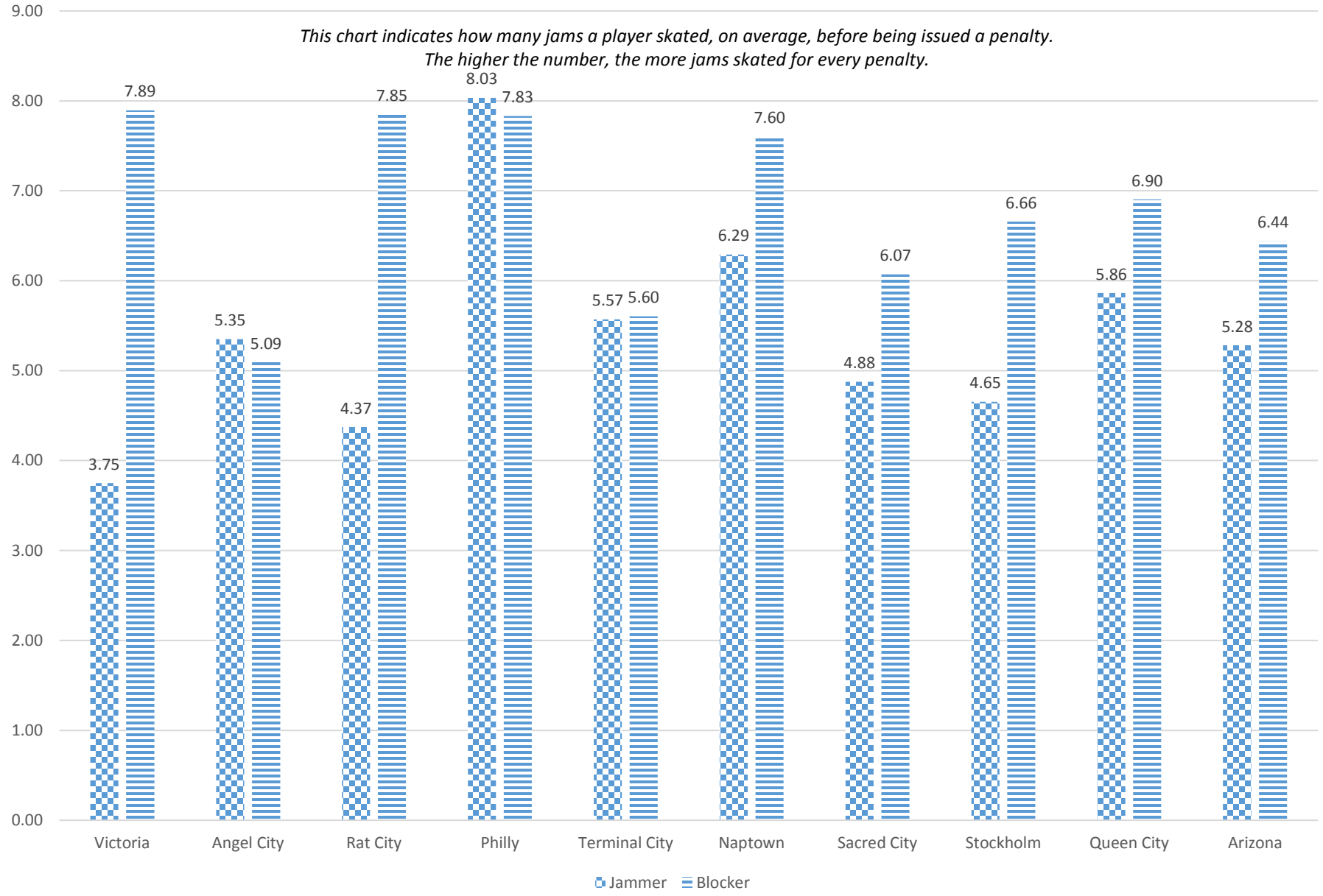
### Blocker Penalties Per Game - D1 Vancouver



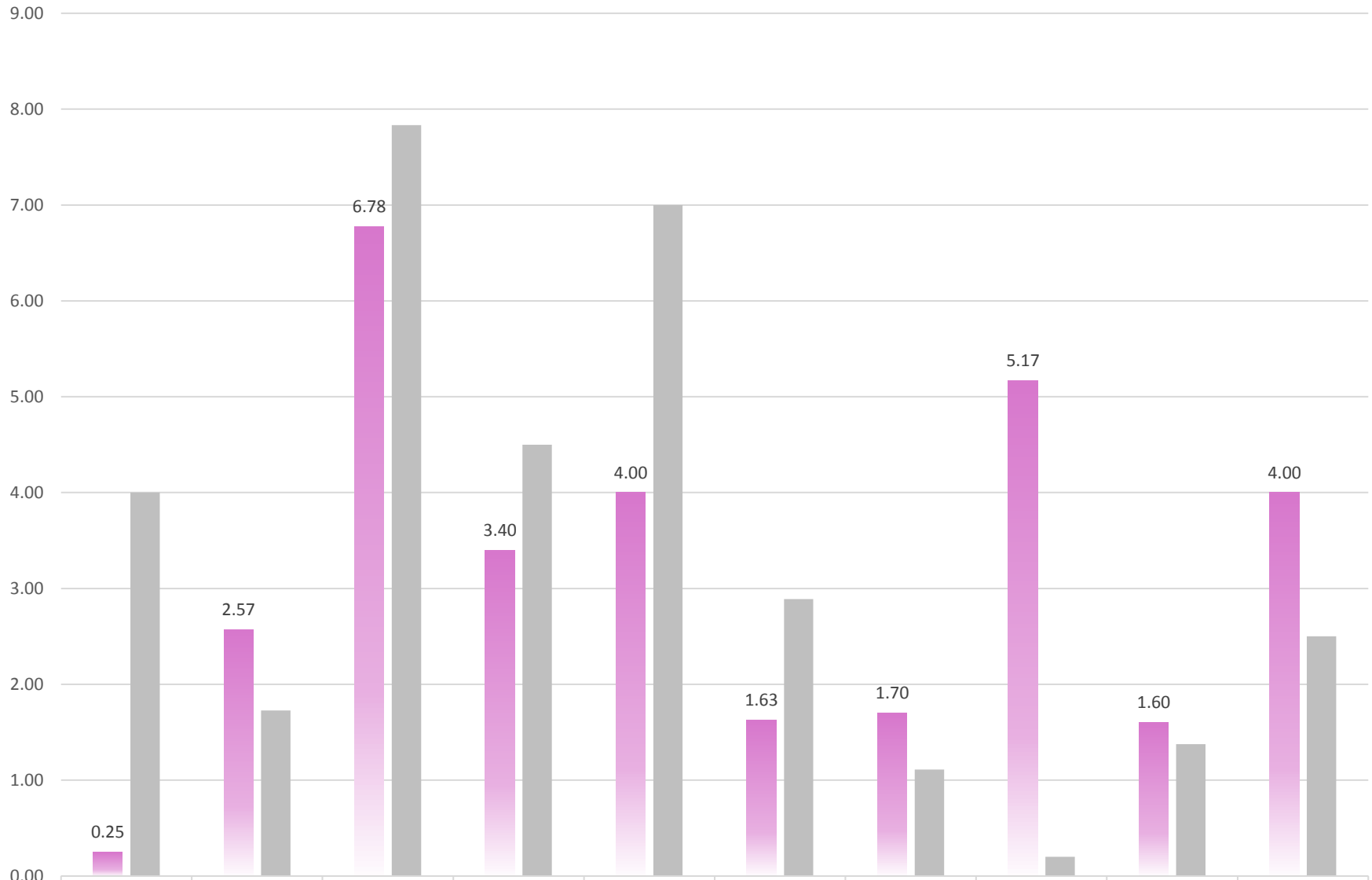
■ 2016	19.00	32.43	20.56	23.80	27.83	22.75	28.60	22.83	24.80	28.44
■ 2015	25.75	32.27	25.67	38.00	28.71	24.67	34.22	33.00	29.63	27.08

### 2016 Season Jams Per Penalty by Position - D1 Vancouver

*This chart indicates how many jams a player skated, on average, before being issued a penalty.  
The higher the number, the more jams skated for every penalty.*

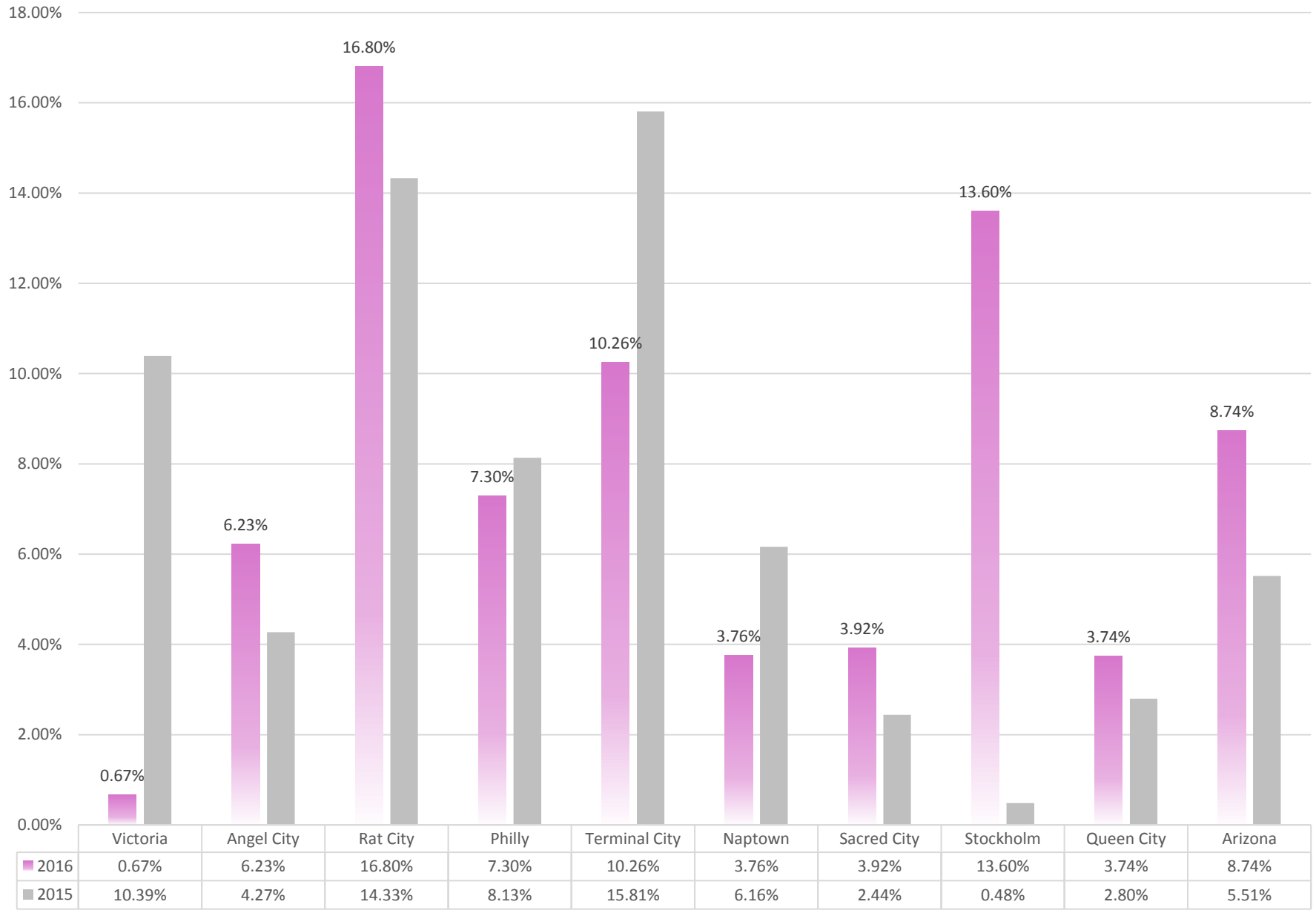


### Star Passes Per Game - D1 Vacouver

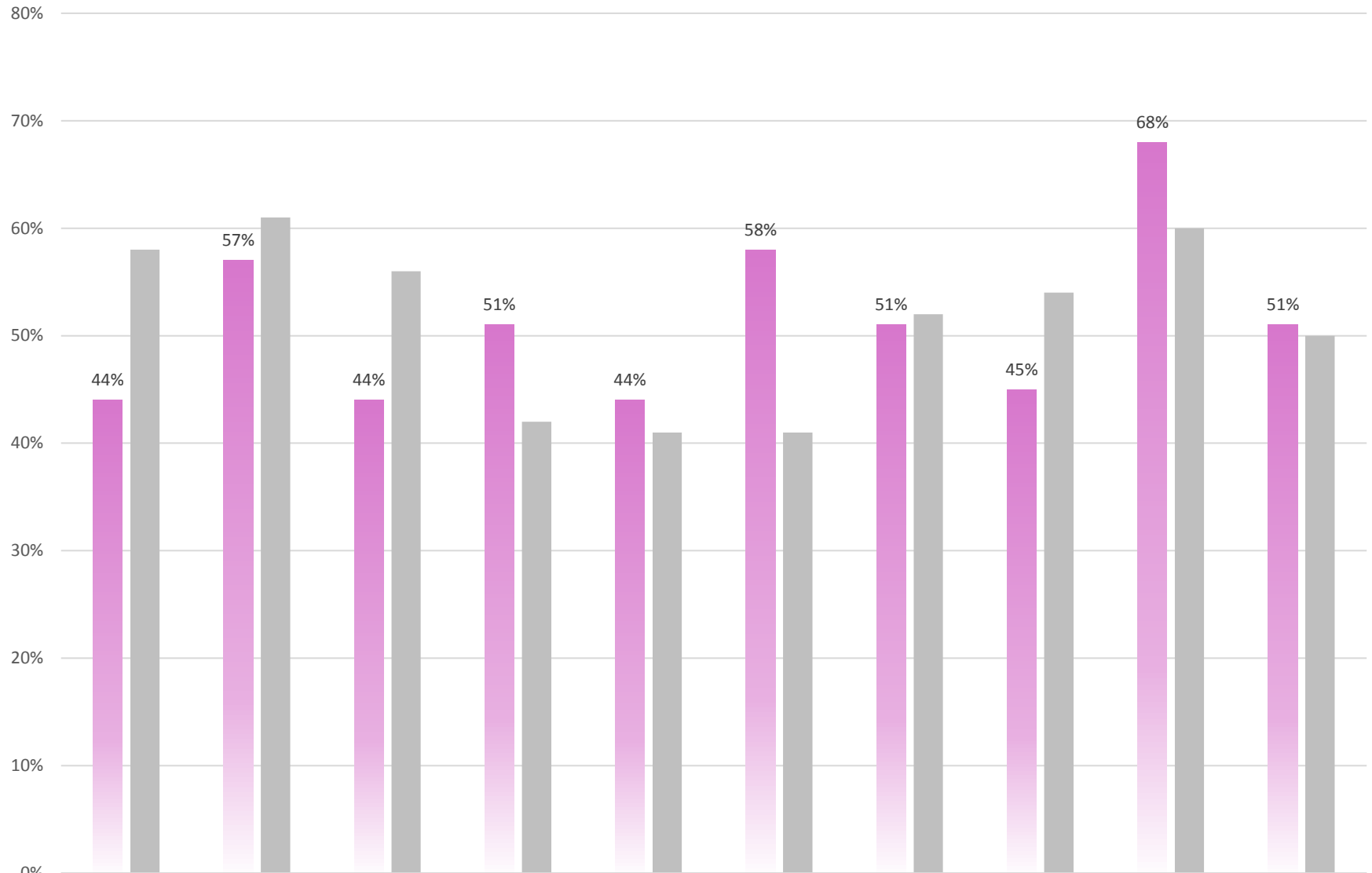


	Victoria	Angel City	Rat City	Philly	Terminal City	Naptown	Sacred City	Stockholm	Queen City	Arizona
2016	0.25	2.57	6.78	3.40	4.00	1.63	1.70	5.17	1.60	4.00
2015	4.00	1.73	7.83	4.50	7.00	2.89	1.11	0.20	1.38	2.50

% of Jams with Star Passes - D1 Vacouver



### 2016 Season Lead Rate - D1 Vacouver



■ 2016	44%	57%	44%	51%	44%	58%	51%	45%	68%	51%
■ 2015	58%	61%	56%	42%	41%	41%	52%	54%	60%	50%