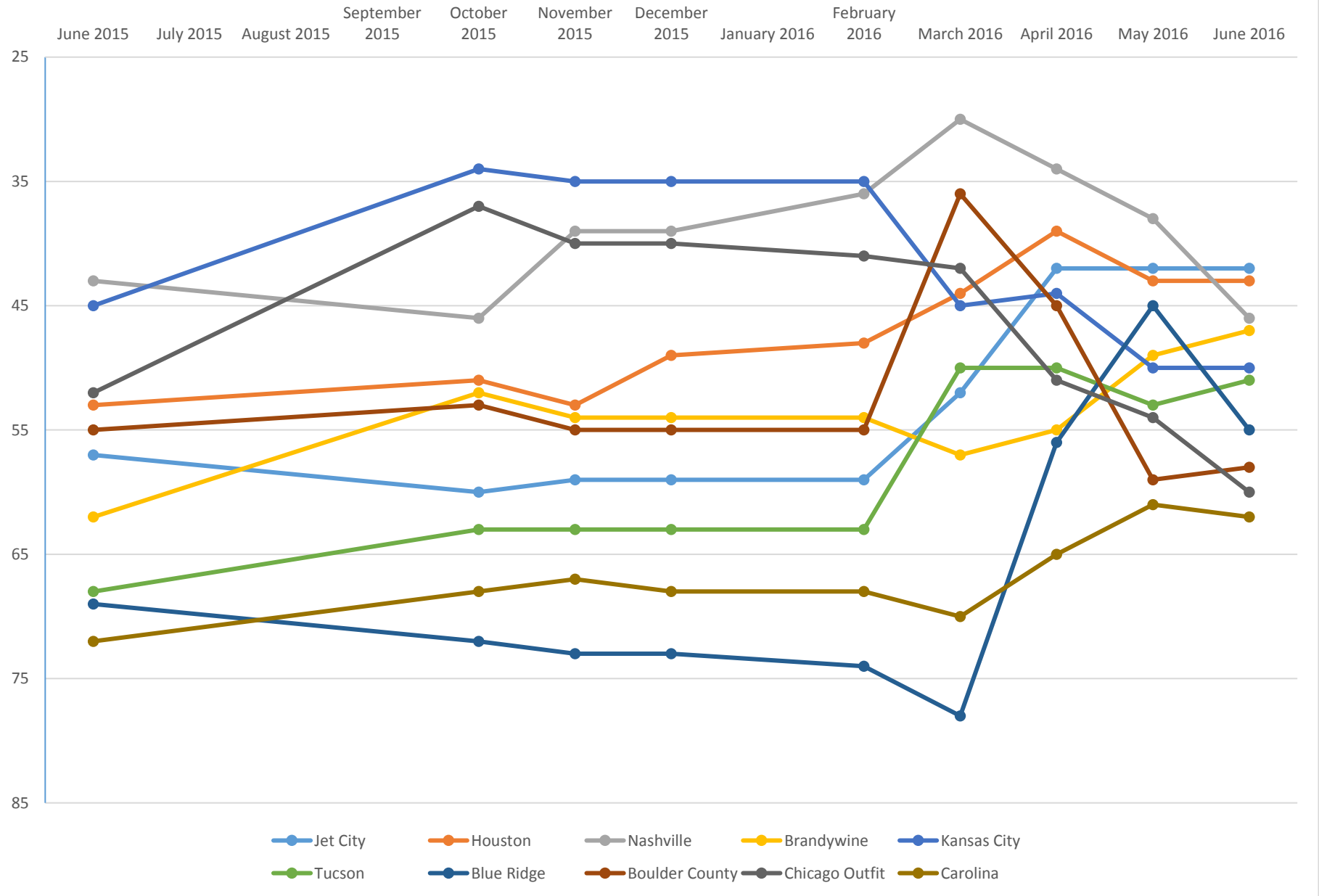
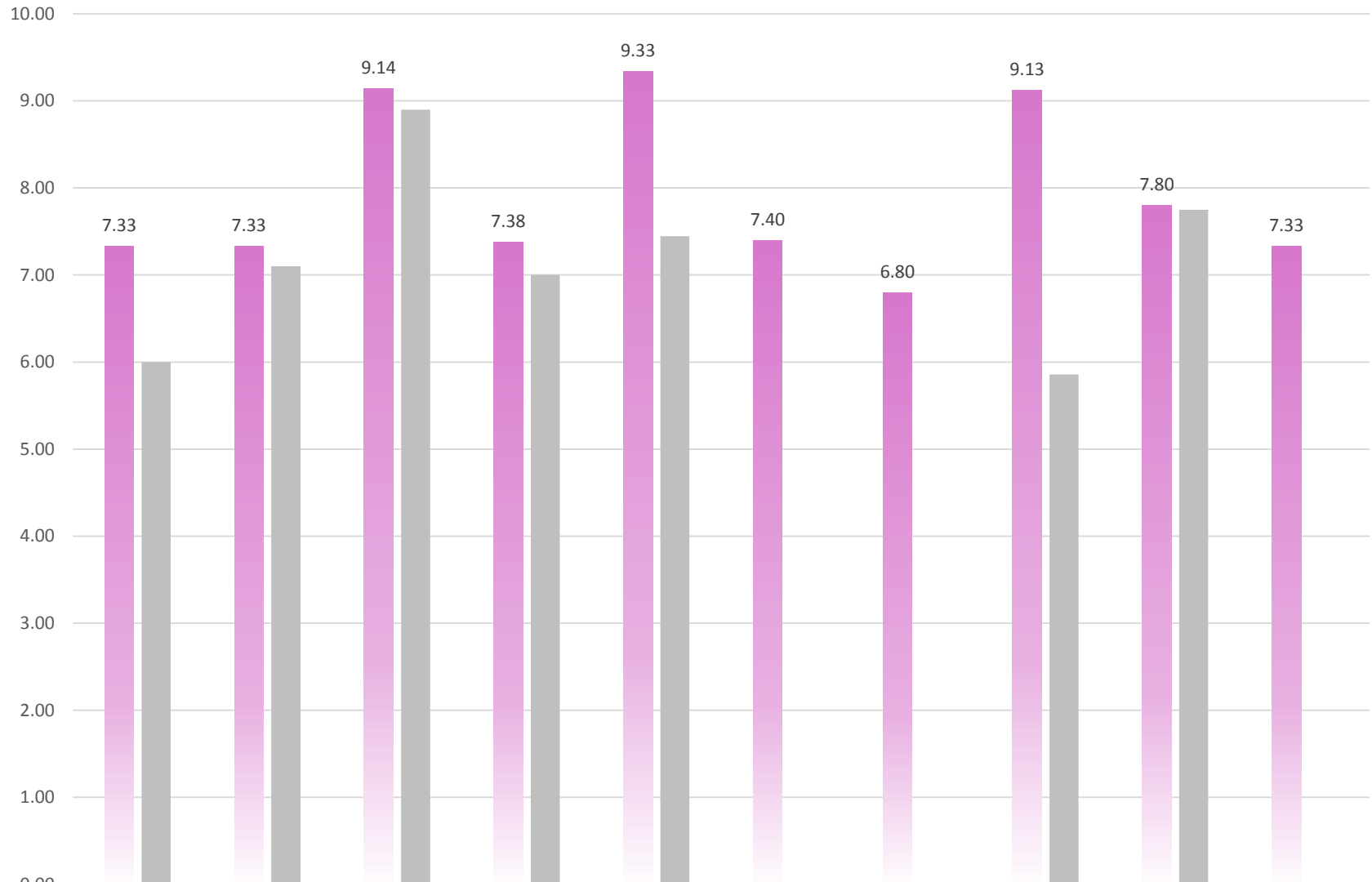


13 Month WFTDA Rankings Movement - D2 Wichita



Jammer Penalties Per Game - D2 Wichita

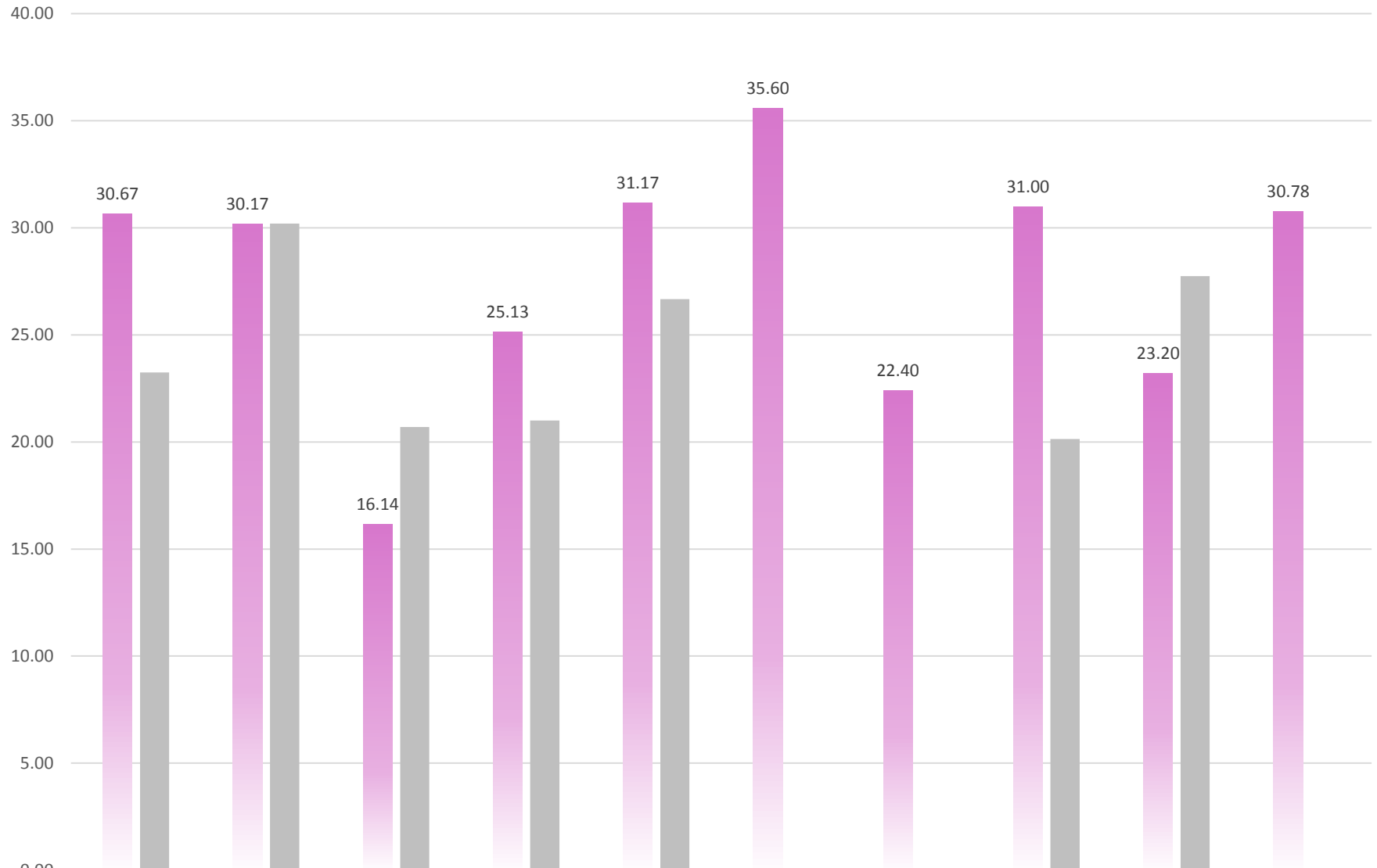


■ 2016 Season

■ 2015 Season

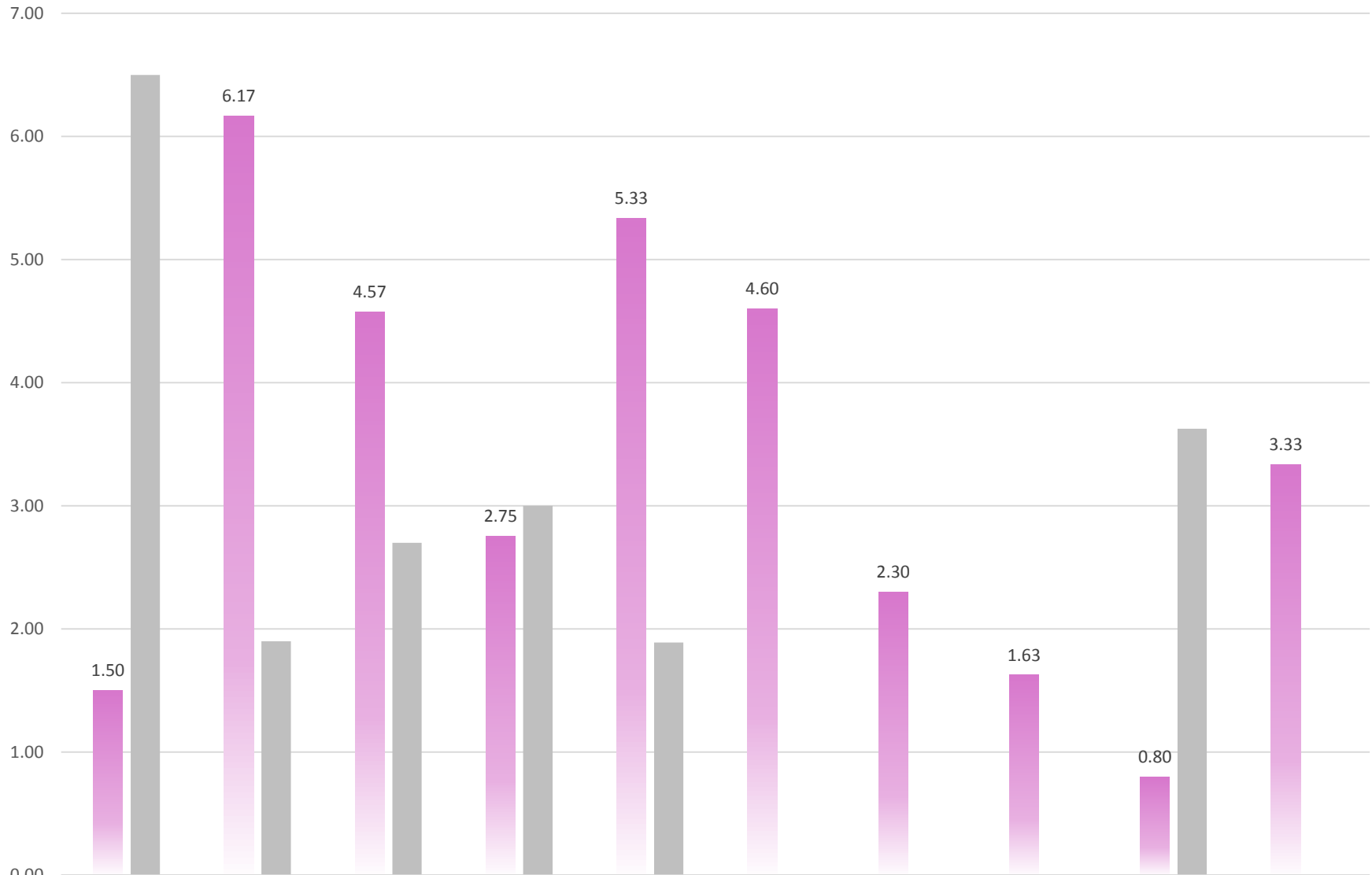
Jet	Houston	Nashville	Brandywine	Kansas City	Tucson	Blue Ridge	Boulder County	Chicago Outfit	Carolina
7.33	7.33	9.14	7.38	9.33	7.40	6.80	9.13	7.80	7.33
6.00	7.10	8.90	7.00	7.44			5.86	7.75	

Blocker Penalties Per Game - D2 Wichita



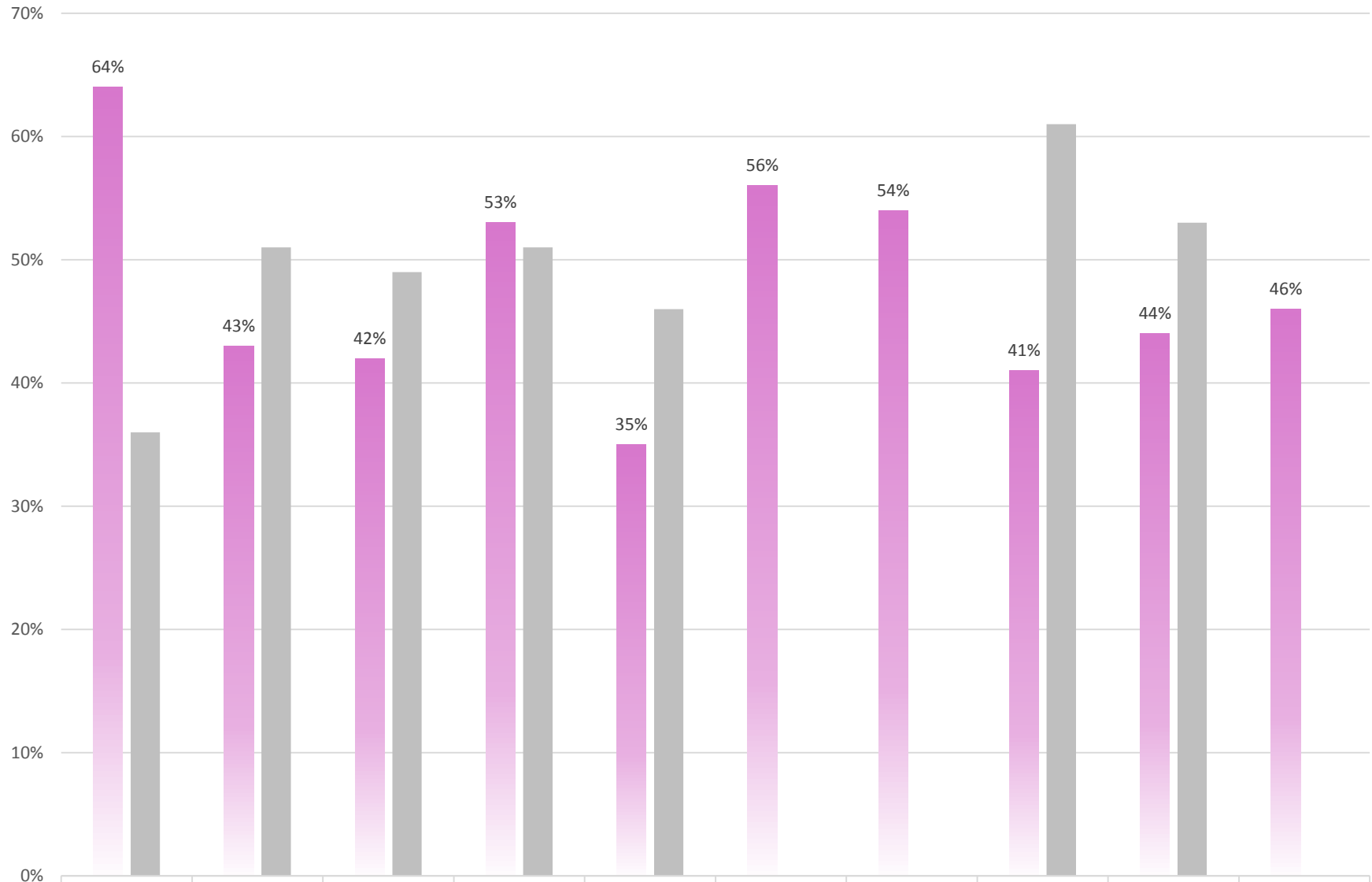
■ 2016	30.67	30.17	16.14	25.13	31.17	35.60	22.40	31.00	23.20	30.78
■ 2015	23.25	30.20	20.70	21.00	26.67			20.14	27.75	

Star Passes Per Game - D2 Wichita



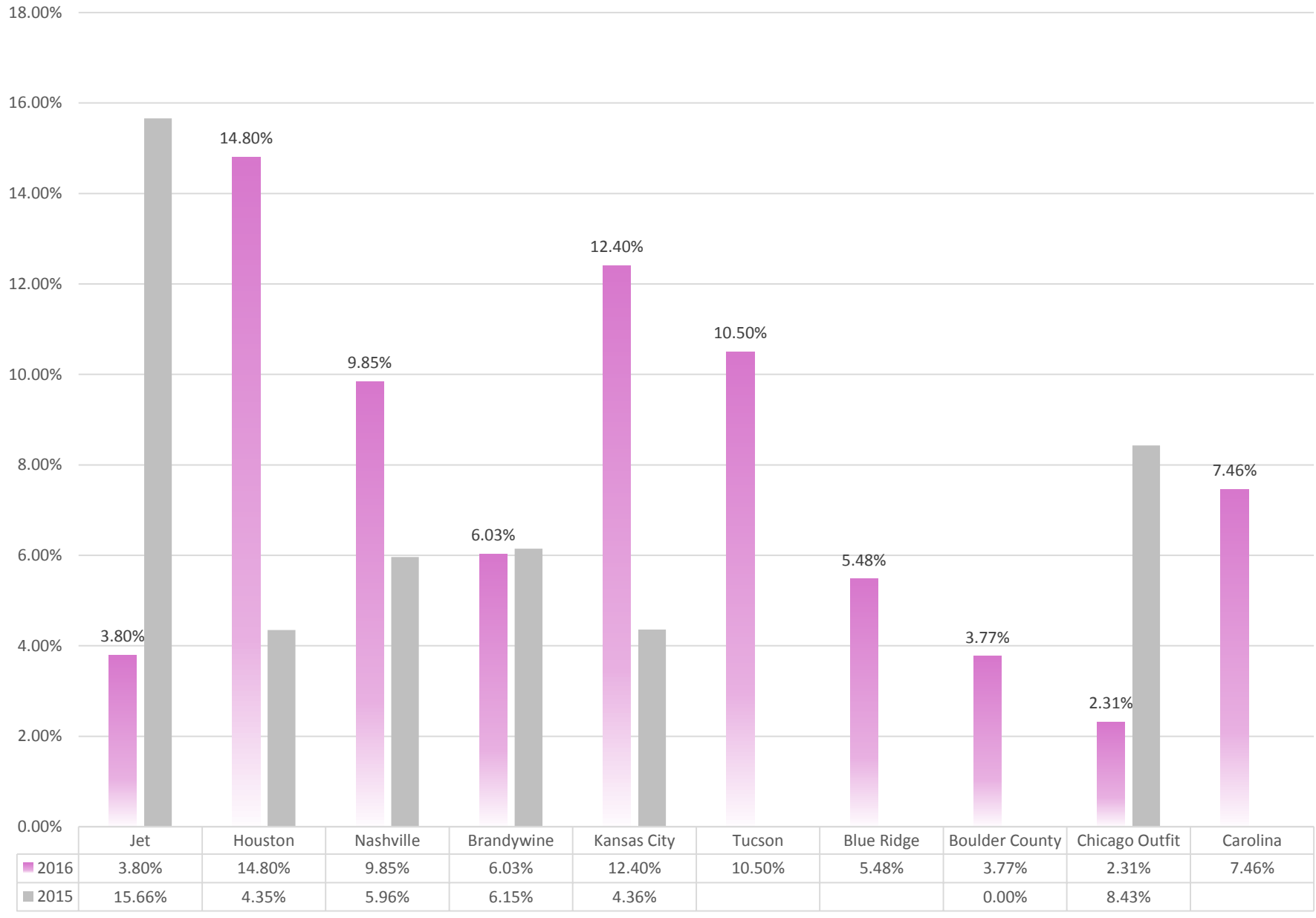
2016	1.50	6.17	4.57	2.75	5.33	4.60	2.30	1.63	0.80	3.33
2015	6.50	1.90	2.70	3.00	1.89			0.00	3.63	

2016 Season Lead Rate



■ 2016	64%	43%	42%	53%	35%	56%	54%	41%	44%	46%
■ 2015	36%	51%	49%	51%	46%			61%	53%	

% of Jams with Star Passes - D2 Wichita



2016 Season - Jams Per Penalty by Position

*This chart indicates how many jams a player skated, on average, before being issued a penalty.
The higher the number, the more jams skated for every penalty.*

